

**SINGLE JET DRY DIAL WATER METER  
MODEL: LXSC-20D5**



**APPLICATION:**

- ◆ Measuring the volume of cold potable water passing through the pipeline with remote reading device.

**FEATURES:**

- ◆ Brass shell, solid and robust design, long service guaranteed.
- ◆ High quality materials fiberglass reinforced polymerization amine, corrosion resistance.
- ◆ Optimum accuracy and performance at all times
- ◆ Revolutionary grooved piston for improved, durability and performance.
- ◆ Durable tamperproof construction.
- ◆ Accurate measurement, easy and long term clear reading, etc.

**DATA OUTPUT OPTIONS:**

1 Pulse Per 5 Gallons

**WORKING CONDITION:**

- ◆ Water temperature:  $\leq 120^{\circ}\text{F}$  ( $50^{\circ}\text{C}$ )
- ◆ Water pressure:  $\leq 150$  psi (10bar)

**MAXIMUM PERMISSIBLE ERROR:**

- ◆ In the lower zone from  $q_{\min}$  inclusive up to but excluding  $q_t$  is  $-5\% \sim +1\%$
- ◆ In the upper zone from  $q_t$  inclusive up to and including  $q_s$  is  $\pm 1.5\%$

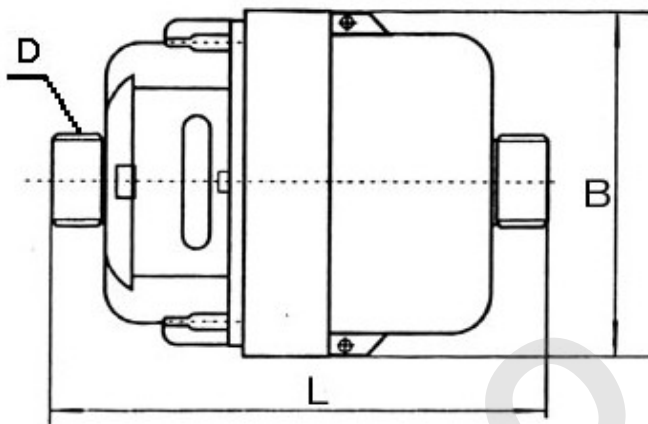
**ACCESSORIES:**

Optional: Both brass connections and plastic connections are available.

---

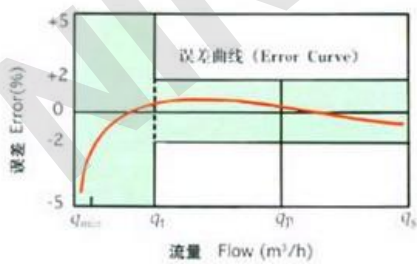
**MAIN TECHNICAL DATA:**

Type	Size	$q_s$	$q_p$	$q_t$	$q_{min}$	Min. Reading	Max. Reading
		Max. Flow	Nominal Flow	Transitional Flow	Min. Flow		
		Gallon/minute				Gallon	
LXSC-20D5	5/8" x 3/4"	20	15	1.0	0.25	0.1	99,999,999



Type	Size	Length	Width	Connection Thread	Weight
LXSC-20D5	5/8" x 3/4"	115	96	G1B	1.5kg

• 流量误差曲线 Flow Error Curve



• 压力损失曲线 Head Loss Curve

